



BROADCAST CENTER

STUDIOS, REMOTE HUB, FACILITIES



VIA INGEGNOLI 32/38
COLOGNO MONZESE (MI)
+39 02 2539541



The EMG Italy Broadcast Center is a technological excellence, and a hub dedicated to the major Italian media players, primarily focused on the production and distribution of live events. The Center is connected via optics fiber with major distributors and broadcasters, including Sky, Mediaset, El Towers, AWS, and Milan Internet eXchange.

The Broadcast Center extends over 6,000 square meters and includes:

- 1 Playout Center
- 1 MCR for feed reception and distribution
- 5 Studios (one virtual)
- 7 TV production galleries
- Large office and newsroom areas
- 1 Instant Replay Center dedicated to Lega Basket
- 30 remote production workstations
- 10 editing rooms
- 1 warehouse for OB HDR-UHD trucks and equipment

BROADCAST CENTER



The EMG Italy Broadcast Center is located in Cologno Monzese (MI), easily accessible by car or public transportation, with parking, internal bar service, and 24/7 security.

- **By car:** Easily reachable from both the Northern A52 and Eastern A51 Milan Ring Roads.
- **By metro:** A few minutes from the green line M2 Cologno Sud and Cascina Gobba stations.
- **By plane:** About 10 km from Linate Airport.

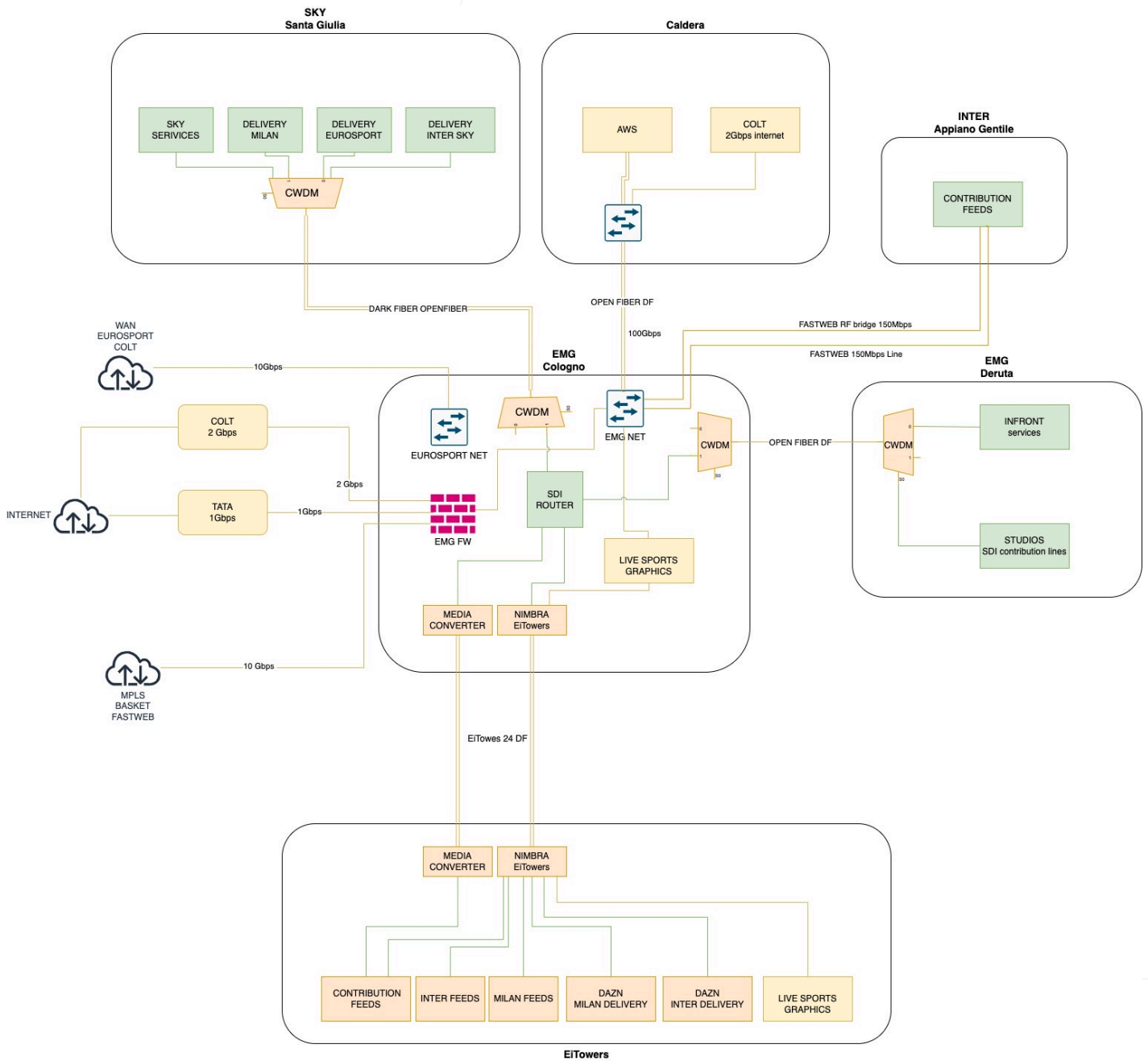


EMG Milan MCR has been lately enhanced to cover different projects and additional clients, such as FISU TV for the 2023-2027 Summer and Winter World University Games.

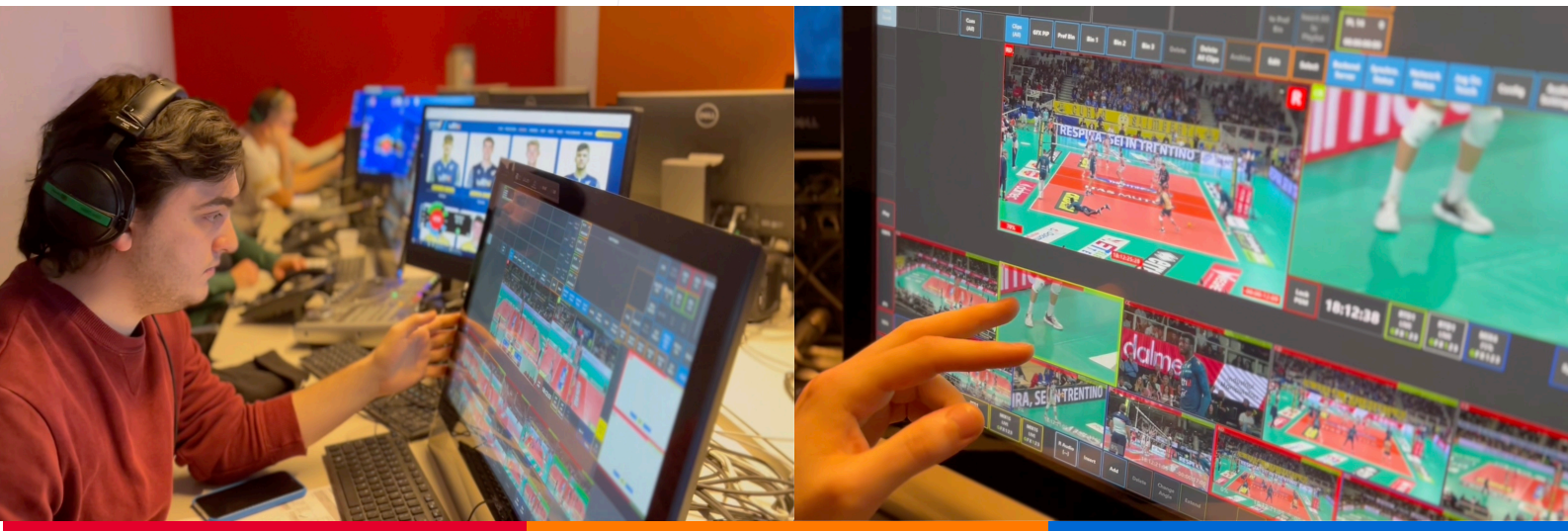
Capable of running up to 8 incoming live feeds and potentially endless outgoing feeds, the powerful Master Control Room has been designed to manage the channels for different clients, and the worldwide distribution towards all rights holders and takers involved.

The main solutions deployed include a combination of a cloud-based platform for distribution, management and creation of contents and highlights, and SRT technology for receiving and broadcasting feeds.

CONNECTIVITY CAPABILITIES



The Center is connected via optics fiber with major distributors and broadcasters, including Sky, Mediaset, El Towers, AWS, and Milan Internet eXchange.



An innovative Remote Production Hub with 30 all-in-one workstations is active at the Broadcast Center covering a wide range of sports events every season.

2024 REMOTE PRODUCTION PROJECTS:

- Female Volley Serie A1: 170 seasonal events – 425h live
- Male Volley A1 Superlega: 145 seasonal events – 363h live
- Female Soccer Serie A: 50 matches – 125h live
- Female Soccer Serie B: 120 matches – 440h live
- LBA Male Basket Serie A: 280 matches – 560h live
- FIGC Soccer Youth League: 50 events – 100h live
- Others – 50h live

ABOUT 5.600 PERSONS ON VENUE PER YEAR
PRODUCING AROUND 2.000H LIVE



In the Broadcast Center we have **5 Studios**:

- STUDIO 1: 420 sqm
- STUDIO 2: 115 sqm
- STUDIO 3: 240 sqm
- STUDIO 4: 383 sqm
- STUDIO 5: 18 sqm

Each studio comes with additional spaces and services: dressing rooms, Wi-Fi, fire safety certification, makeup rooms, tailoring, dedicated restrooms, independent access, truck access for loading and unloading, wardrobe, and dedicated parking.

**SIZE:**

420 sqm (29 m X 14.4 m)

Ceiling height 7 m (total studio height : 8.5 m)

WIRING:

Fully wired for audio and video connections to the control room, with complete coverage for wireless microphones, intercom, and data services.

EQUIPMENT:

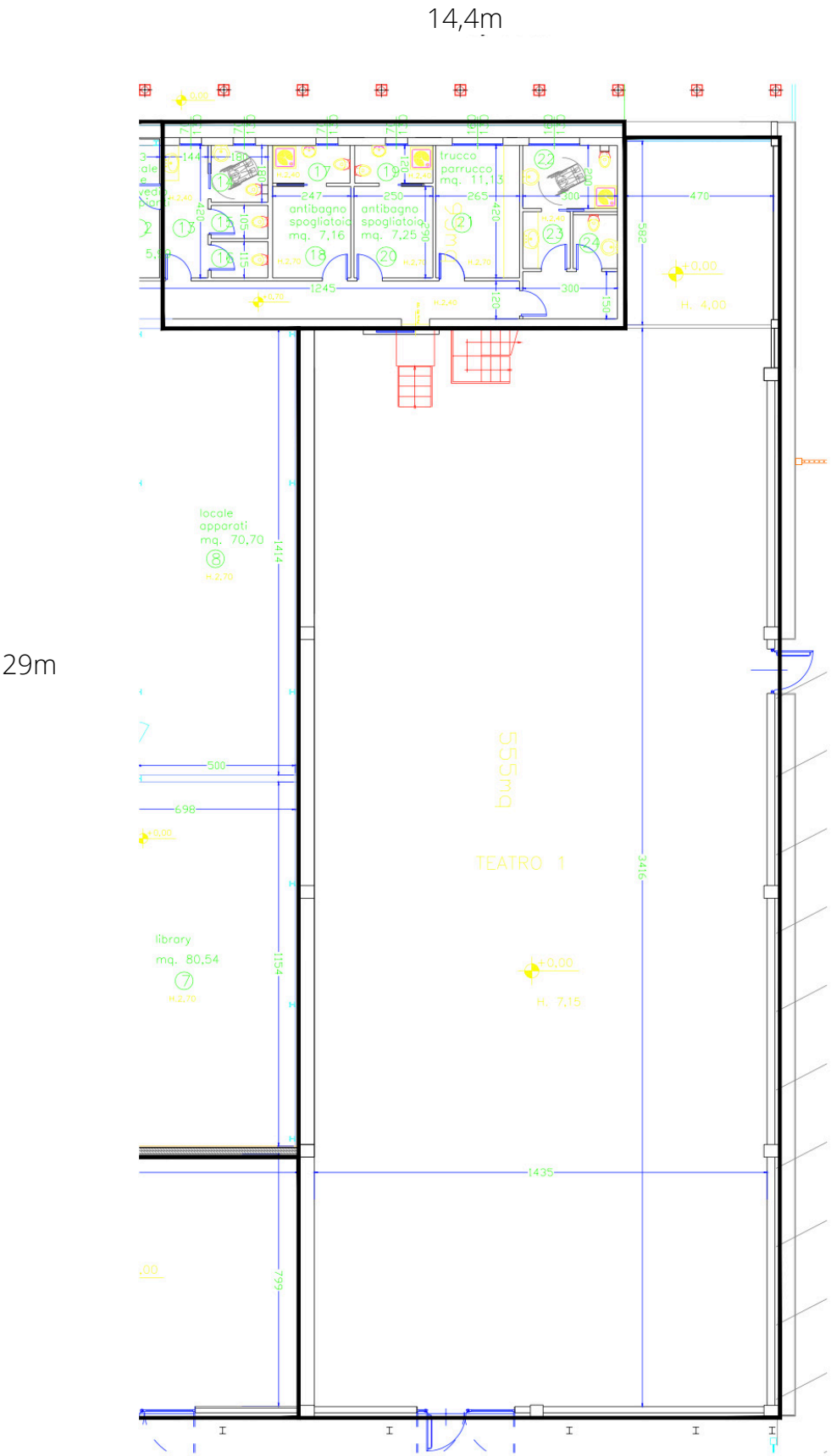
A parking area next to the studio allows positioning of an OB Van for mobile control. The studio is equipped with access control systems and smoke detectors, allowing permits for live shows (CPI / CPV) with up to 100 people.

ADDITIONAL SPACE:

Dressing room, makeup room, production offices and warehouse.

Productions held in Studio 1 include: *Highlight Show* airing on Prime Video, *Central Station* for Comedy Central, and *Cuochi d'Italia* produced by Sky Italia for TV8.

STUDIO 1 – FLOOR PLAN





SIZE:

115 sqm (14.4 m X 8m)

Ceiling 7.15 m (total studio height: 8.75 m)

WIRING:

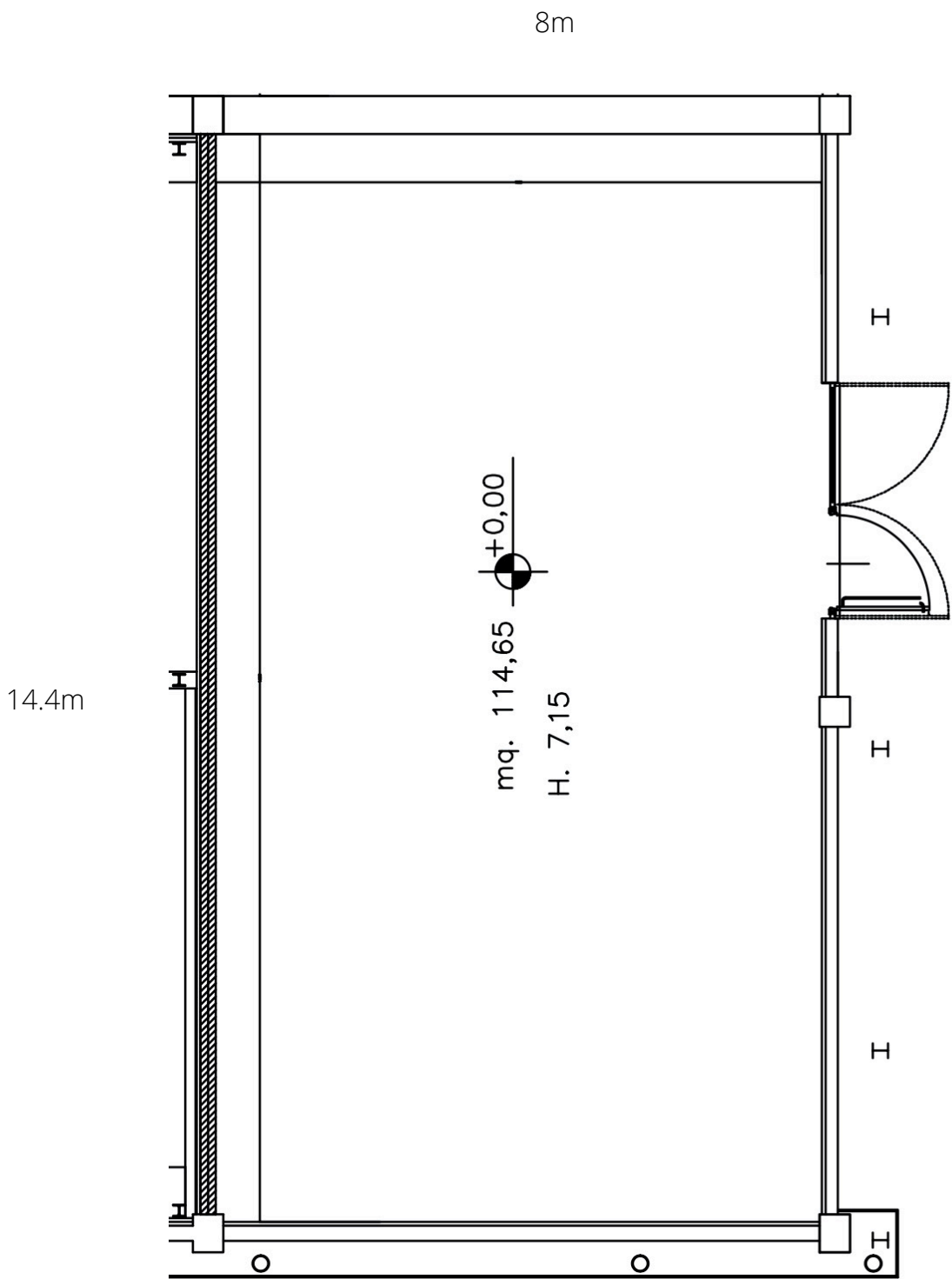
Fully wired for audio and video connections to the control room, with complete coverage for wireless microphones, intercom, and data services.

EQUIPMENT:

A parking area next to the studio allows positioning of an OB Van for mobile control. The studio is equipped with access control systems and smoke detectors, allowing permits for live shows.

Productions held in Studio 2 include: *Inferno del lunedì* for Milan Channel, *Innovation Days* for Il Sole 24 Ore, and *Top Legal Industry Awards*.

STUDIO 2 - FLOOR PLAN



**SIZE:**

240 sqm (17 m X 14.4 m)

Ceiling 7,15 m (total studio height: 8.5 m)

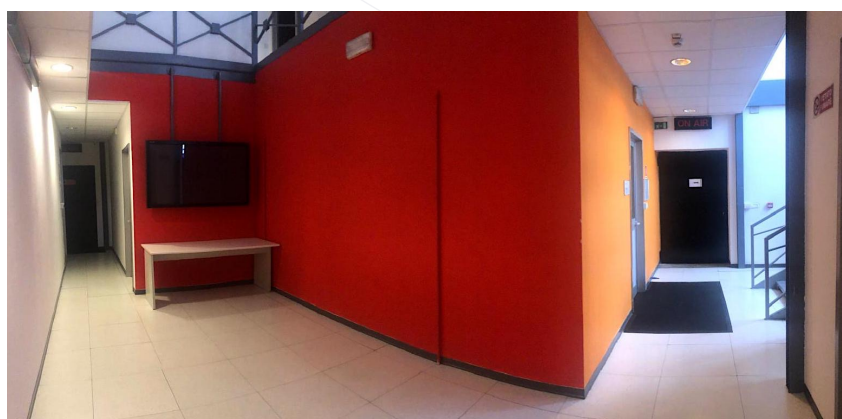
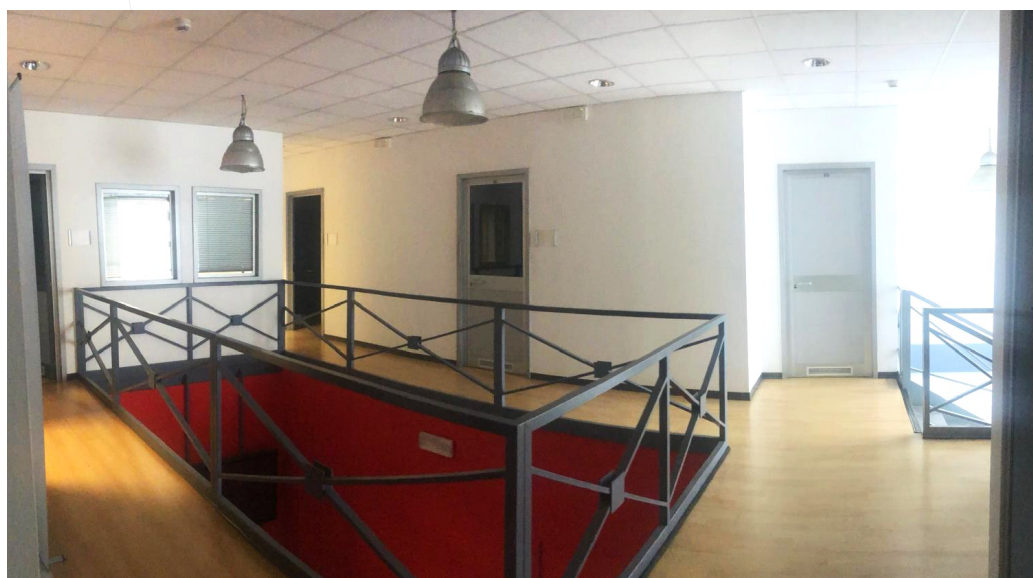
WIRING:

Fully wired for audio and video connections to the control room, with complete coverage for wireless microphones, intercom, and data services.

EQUIPMENT:

Studio 3 is equipped with 3 greenback walls, a dedicated control room, and customizable spaces for editorial offices and post-production rooms.

STUDIO 3 – ADDITIONAL SPACE



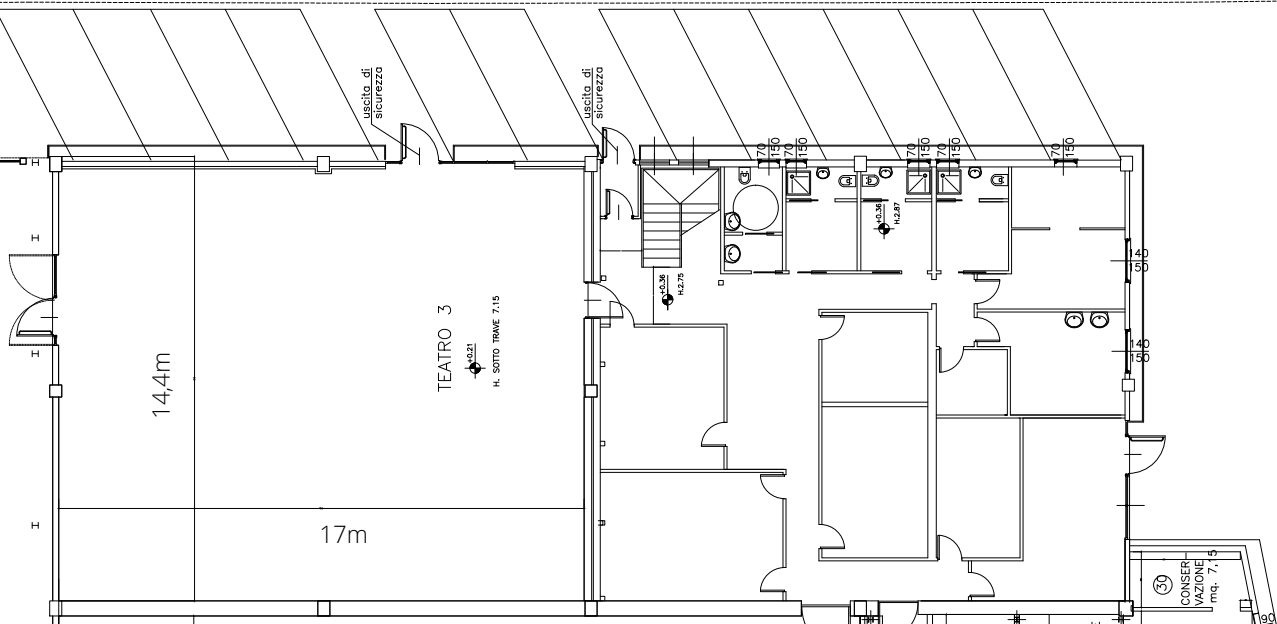
ADDITIONAL CUSTOMISABLE SPACES, OFFICES,
DRESSING ROOMS AND TAILOR'S ROOM

The annexes are located on the ground and first floors of the Studio 3 building

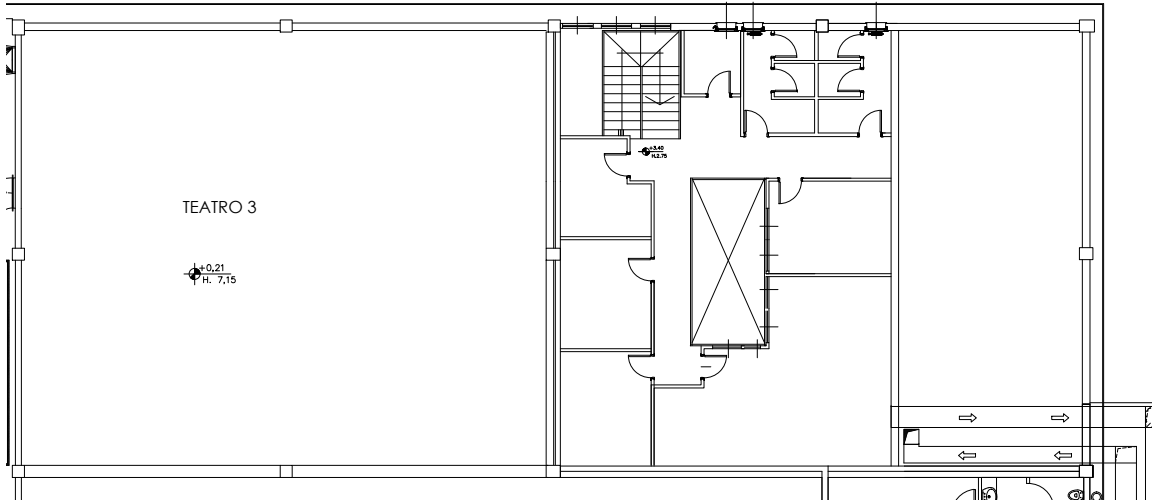
STUDIO 3 - FLOOR PLAN



STUDIO 3 AND ADDITIONAL SPACE - GROUND FLOOR:



STUDIO 3 AND ADDITIONAL SPACE - FIRST FLOOR:





SIZE:

383 sqm (14.40 m x 26.60 m)

Ceiling 7 m (total studio height: 8.5 m)

WIRING:

Fully wired for audio and video connections to the control room, with complete coverage for wireless microphones, intercom, and data services.

EQUIPMENT:

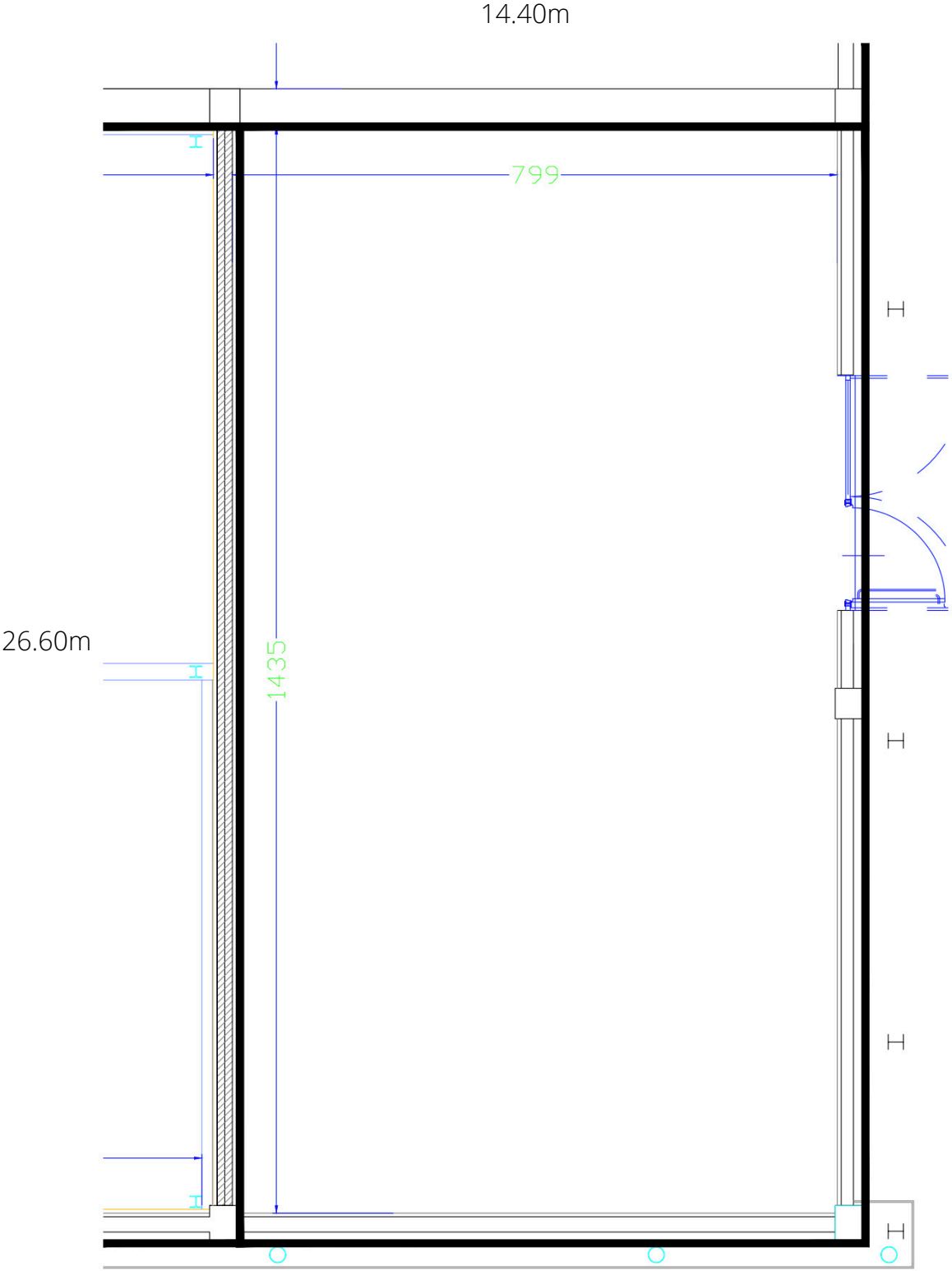
A parking area next to the studio allows positioning of an OB Van for mobile control. The studio is equipped with access control systems and smoke detectors, allowing permits for live shows (CPI / CPV).

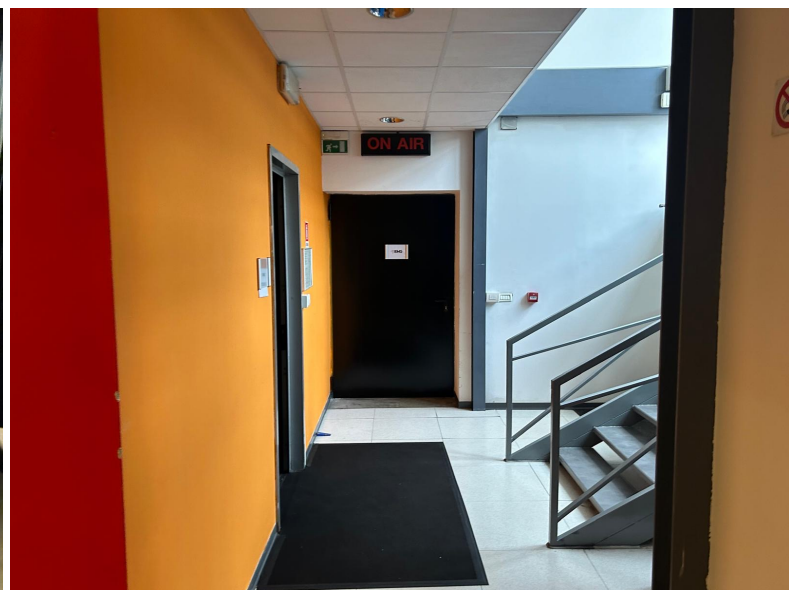
ADDITIONAL SPACE:

4 dressing room with bathroom and 1 shared tailor's room

Productions held in Studio 4 include DAZN shows *Tutti bravi dal divano*, *Sunday Night Square*, *Super Tele*, and several Disney Channlel productions like *Life Bites*, *Alex & Co.*, and *Penny on Mars*.

STUDIO 4 - FLOOR PLAN

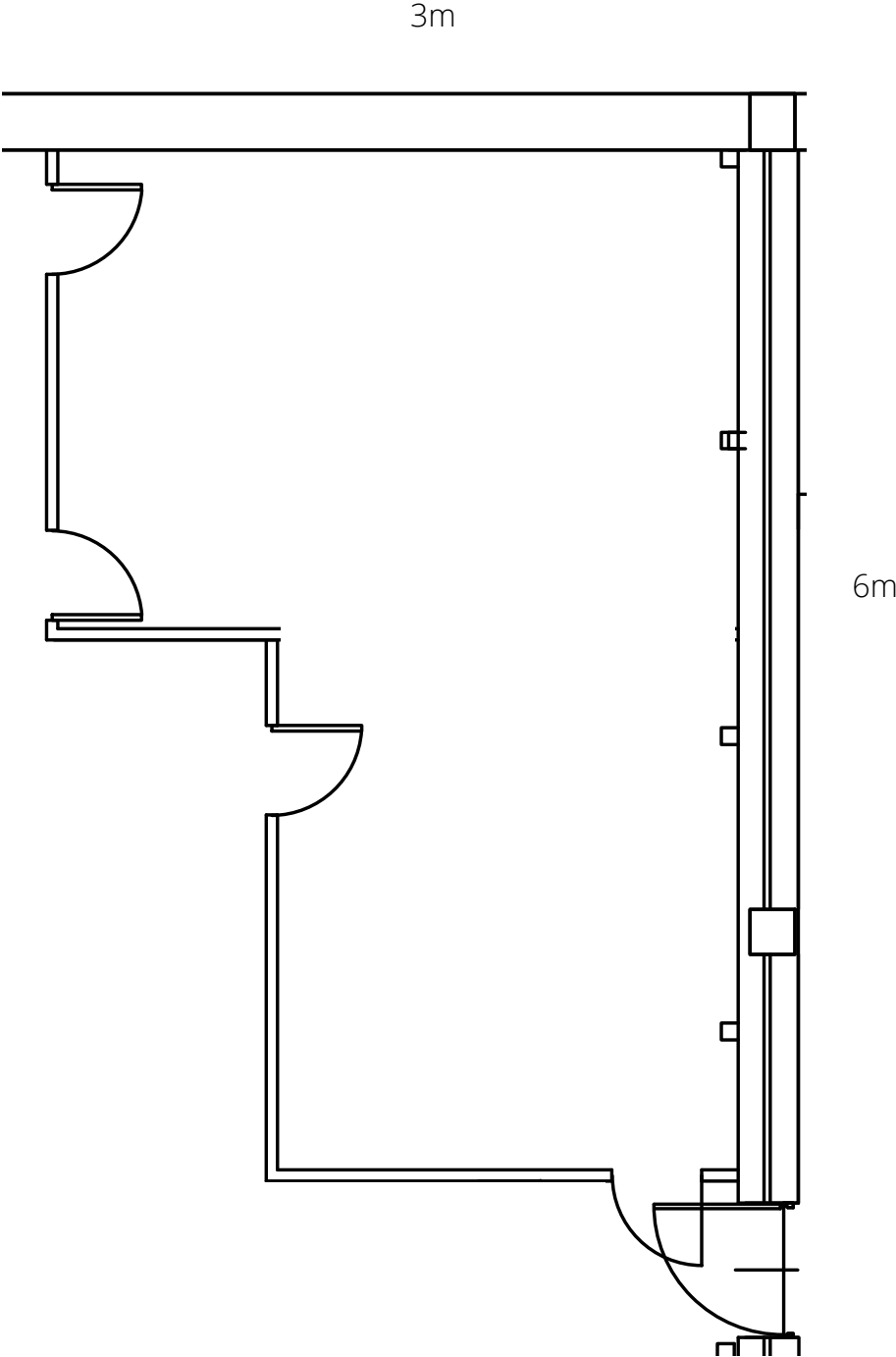




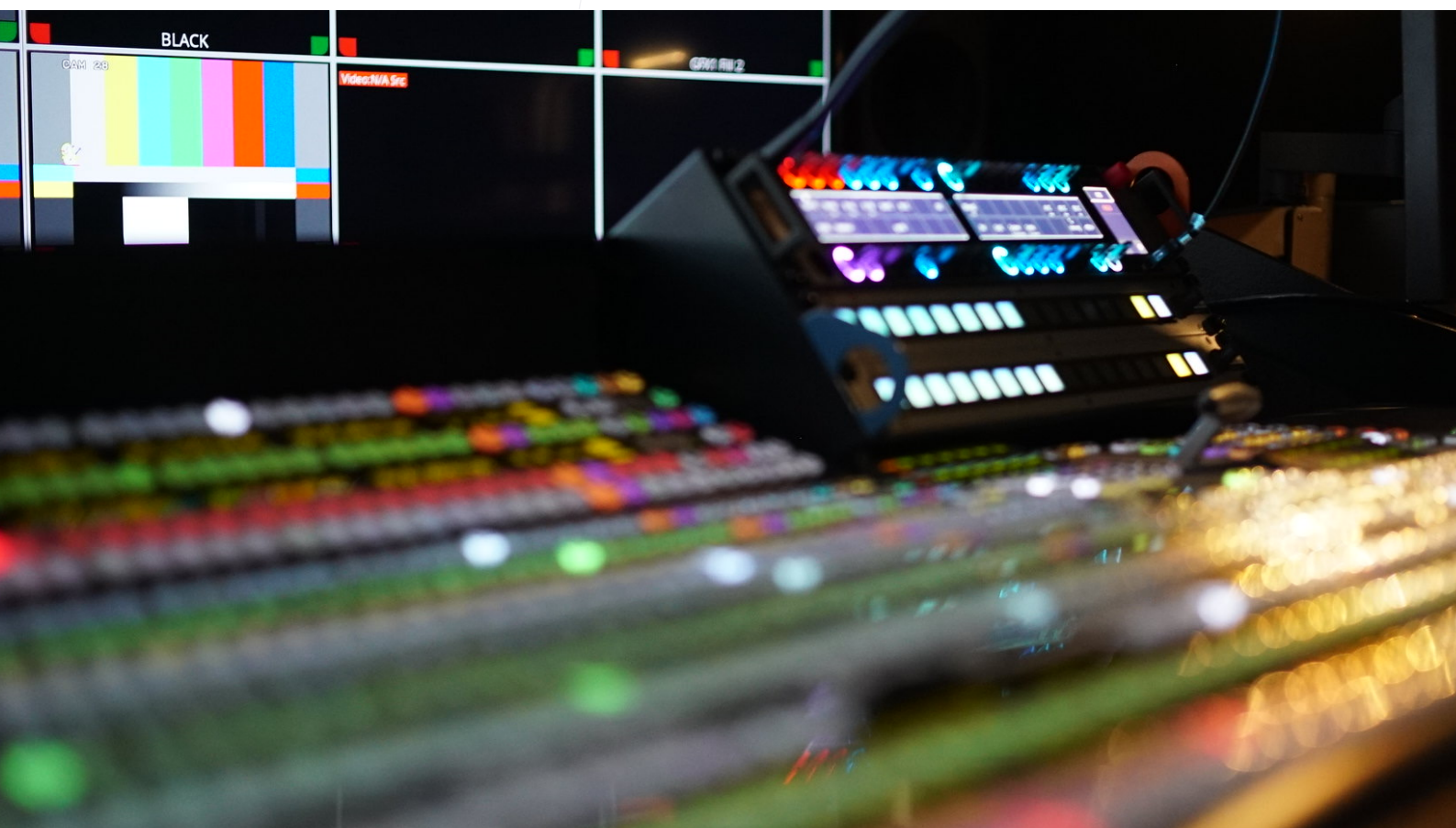
SIZE: 18 sqm (6 m x 3 m)
Ceiling 3 mt

ADDITIONAL SPACE: 4 dressing room with bathroom and 1 shared tailor's room

STUDIO 5 - FLOOR PLAN



GALLERIES AND FACILITIES



AUDIO VIDEO GALLERY 1,2

TECH HQ



The control rooms were built in July 2021 to handle both on-location and remote TV productions. The setup consists of two rooms, one for control and the related audio rooms.

	HD Progressive environment
	1080P 50 workflow
	2 Rec/Replay positions EVS
	HD router Evertz
	Vision mixer FOR'A HVS 2200 with HVS3320
	Audio mixer Yamaha CL5

AUDIO VIDEO GALLERY 1,2



TECH HQ



AUDIO & VIDEO GALLERY

1* Broadcast Vision Mixer 3 M/E min. 36 input (FOR'A HVS 2200 with HVS3320)

PGM ME with 2 keyer, 1 x M/E with 3 DVE/Resizer + Clip Recorder

3* Multiview Monitors 55"

2* Broadcast Monitor (Sony LMDA220)

2* Loudspeakers

1* Broadcast Audio Mixer min. 72 input / 48 output (Yamaha CL5).

1* Multiview Monitors 55"

1* Broadcast Monitor (Sony LMDA220)

4* Loudspeakers

1* Madi – Dante Bridge

1* Audio Multichannel Monitor

3* EVS XT3 Channel Max – 4 x control panels

1* EVS Xfile 3

1* IP Director

9* Router panels

9* Intercom panels

Tally Manager

Acoustic conditioning

Technical desk and chairs

Wi-Fi access

STUDIO THEATER

Broadcast cameras:

5* 3G/4K broadcast camera full chain;

Any choice of short, long, Wide broadcast lens;

Gas pedestal;

4* 4k Ptz cameras (Panasonic AW-UE150) with Ptz controller;

4* Tripod stand for Ptz cameras:

any choice of Radio-mics (Sennheiser)

Any choice of Body pack transmitter, Cardioid pre-polarized condenser;

Any choice of Handheld transmitter; Cardioid Mic, normal SPL, Adapter Sk50,250,3063, In-ear monitor:

In ear kit Wysicom CTK 38 + Phonak invisity.

1* Floor manager position

1* Broadcast monitor;

1* Router panel.

4* Audio/video stage-box studio:

AUDIO VIDEO GALLERY 1,2

TECH HQ



EQUIPMENT ROOM

6*48 RU Racks with reliable cooling and redundant power supply

Dedicated scalable 3G HD-SDI router

Evertz 256x384

Madi I/O

160 i/p frame store

160 o/p mux

32 clean switches

Router redundant system controller

Dedicated scalable Intercom System (min 128 ports)

Riedel 128 ports

AoIP distribution System

Dante

10 Kvm over Ip (Tx-Rx)

2x Sync generator with automatic change over

Glue, DA (reference and signal distribution)

ANCILLIARY

1* Internet connectivity 1Gbit/s

1* Spare internet connectivity 1Gbit/s

1* Dedicated Firewall (Palo Alto)

4* enterprise network switches (Arista 48px 10Gbit)

2* Network switch 10Gbit/s;

Remote access

BUILDING FACILITIES

Reception

24/7 Facility accessible

Armed security from 21:00 to 7:00

Parkings

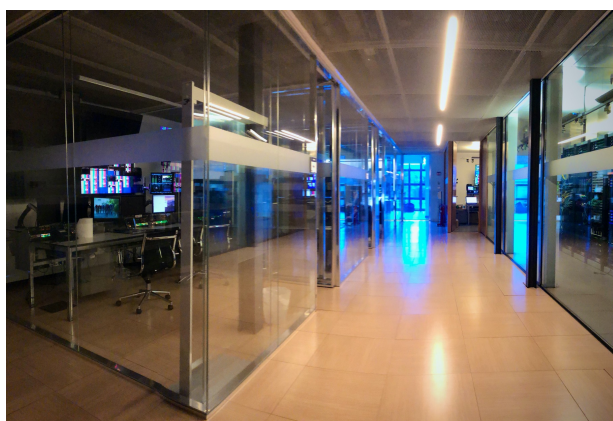
Secure location for technical equipments

Double Power supply (power generator, ups, grid)



SPACE FOR AUDIO AND VIDEO POST-PRODUCTION & MEDIA CONTENT CREATION

The Broadcast Center features also spaces dedicated to audio and video post-production and creation of original media content, including editing suites, Protocols suites, dubbing booths, and quality control rooms.

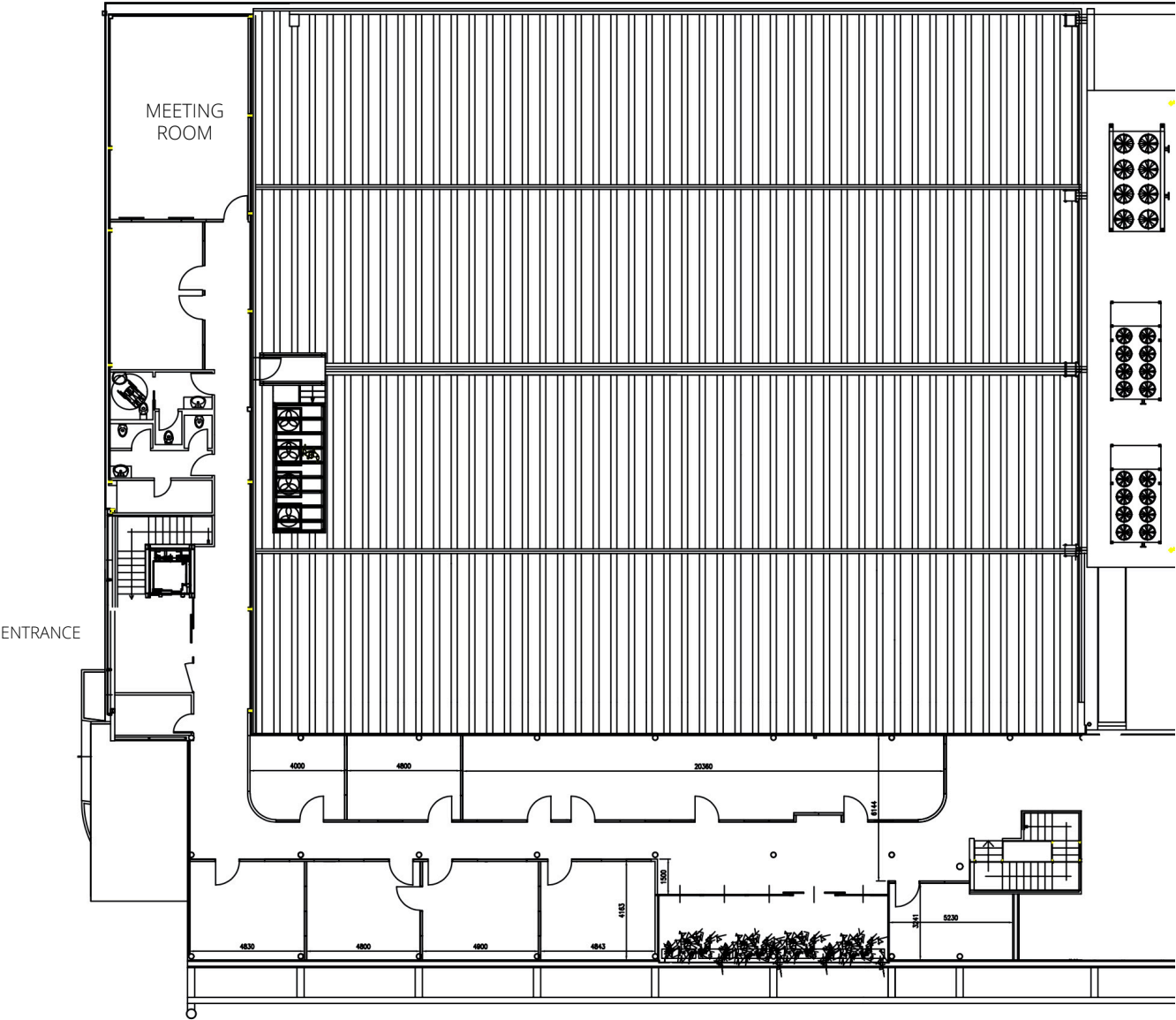




CUSTOMISABLE SPACES FOR EDITORIAL STAFF, OFFICES, SHARED WORK AREAS

On the second floor, there are 400 sqm of customizable spaces for single offices, newsrooms, and shared workspaces. The area has a dedicated entrance and a shared meeting room. Additionally, a bar/restaurant service is available, even on weekends.

OFFICES – FLOOR PLAN





Via Ingegnoli, 32-38
20093 Cologno Monzese (Milano)
+39 022539541

IT.EMGLIVE.COM